

Conservatorio de Música de Puerto Rico

Examen de admisión - Dictado

I. Dictados de notas sueltas

Two staves of musical notation. The first staff is in G major (one sharp) and contains a sequence of notes: G4, A4, B4, C5, B4, A4, G4, F4, E4, D4, C4. The second staff is in D major (two sharps) and contains a sequence of notes: D4, E4, F4, G4, A4, B4, C5, B4, A4, G4, F4, E4, D4.

II. Dictados melódicos

Four staves of musical notation. The first two staves are in bass clef and G major, showing a descending eighth-note scale: G4-F4-E4-D4-C4-B3-A3-G3. The third and fourth staves are in treble clef and G major, showing an ascending eighth-note scale: G4-A4-B4-C5-B4-A4-G4.

III. Dictados Ritmicos

Three staves of musical notation. The first staff shows a rhythmic pattern of eighth notes: G4-A4-B4-C5-B4-A4-G4. The second staff starts at measure 28 and includes a triplet of eighth notes: G4-A4-B4. The third staff starts at measure 30 and shows a rhythmic pattern of eighth notes: G4-A4-B4-C5-B4-A4-G4.



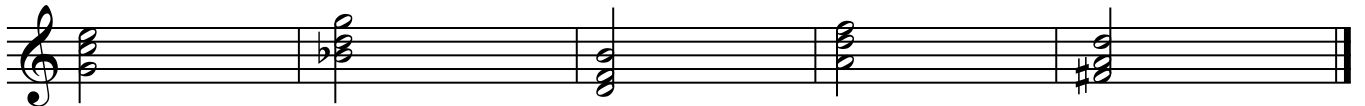
IV. Dictado de Intervalos



V. Dictado de Triadas



VI. Dictado de triadas en inversiones



VII. Dictado de Acordes de séptimas

